



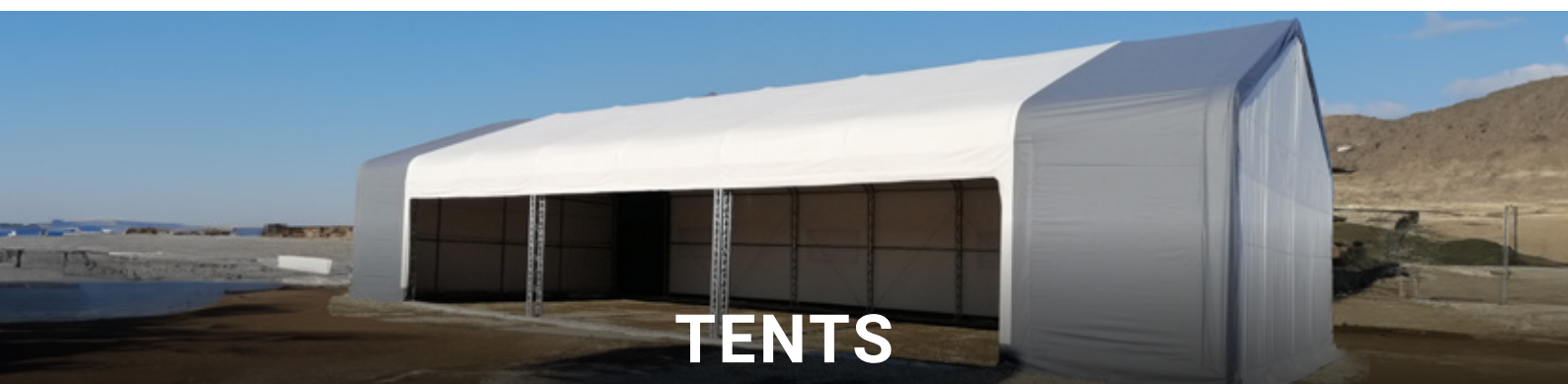
**CATTLE HUSBANDRY**



**SHEEP HUSBANDRY**



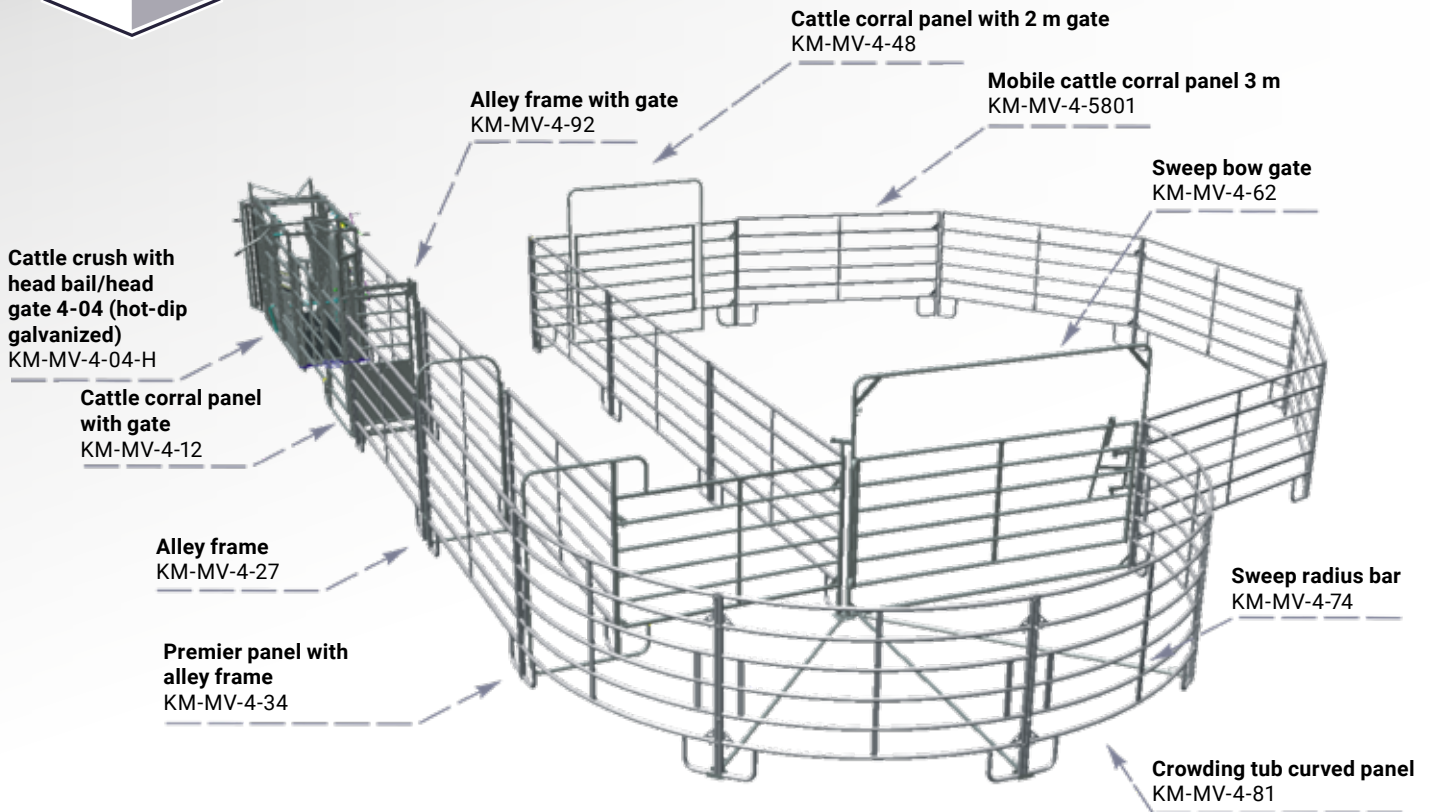
**HALLS**



**TENTS**



**SHELVING SYSTEMS**



Complete sorting sweep corral system 8001 | KM-MV-4-8001

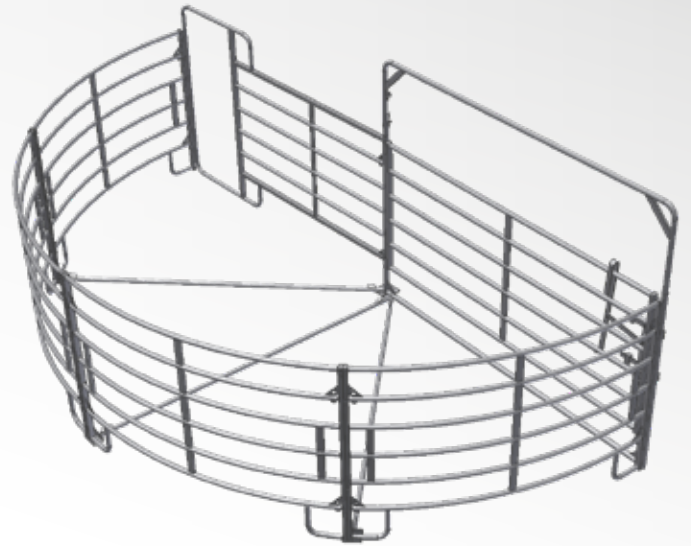
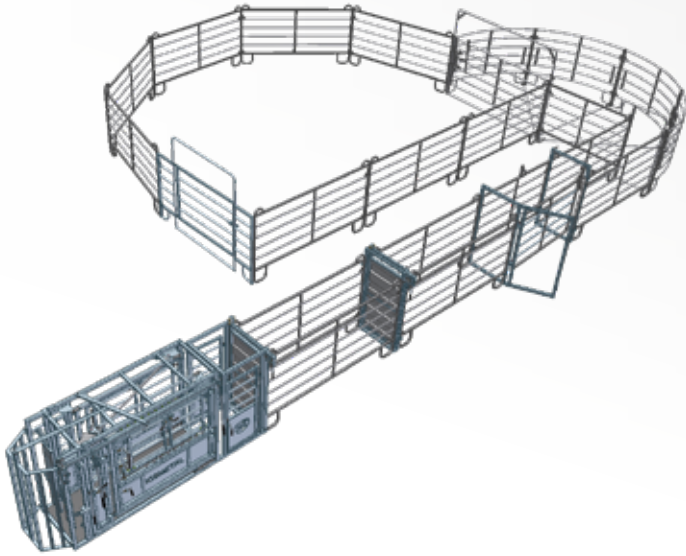
## Mobile sorting sweep corral systems

- Allows to treat the cattle gently and without injuries.
- An essential tool for the marking, counting, classifying, sanitary and veterinary treatment of animals.
- An additional advantage is that it meets the needs of our age in terms of occupational safety, for circumstances prevailing on the working area are fully regulated and controlled during treatments, for the safety of animals and people as well.
- Design and implementation of cattle husbandry technology products / sorting systems even based on individual needs! You dream it, we design it and produce it as well! If necessary, we also undertake an on-site survey in order to create the most accurate plans in our 3D modeling CAD software!
- Hot-dip galvanized design.

The components of our products can be purchased separately. Check out our offer on our websites!  
[szarvasmarhatartas.hu/en](http://szarvasmarhatartas.hu/en) | [kismetal.hu/en](http://kismetal.hu/en)

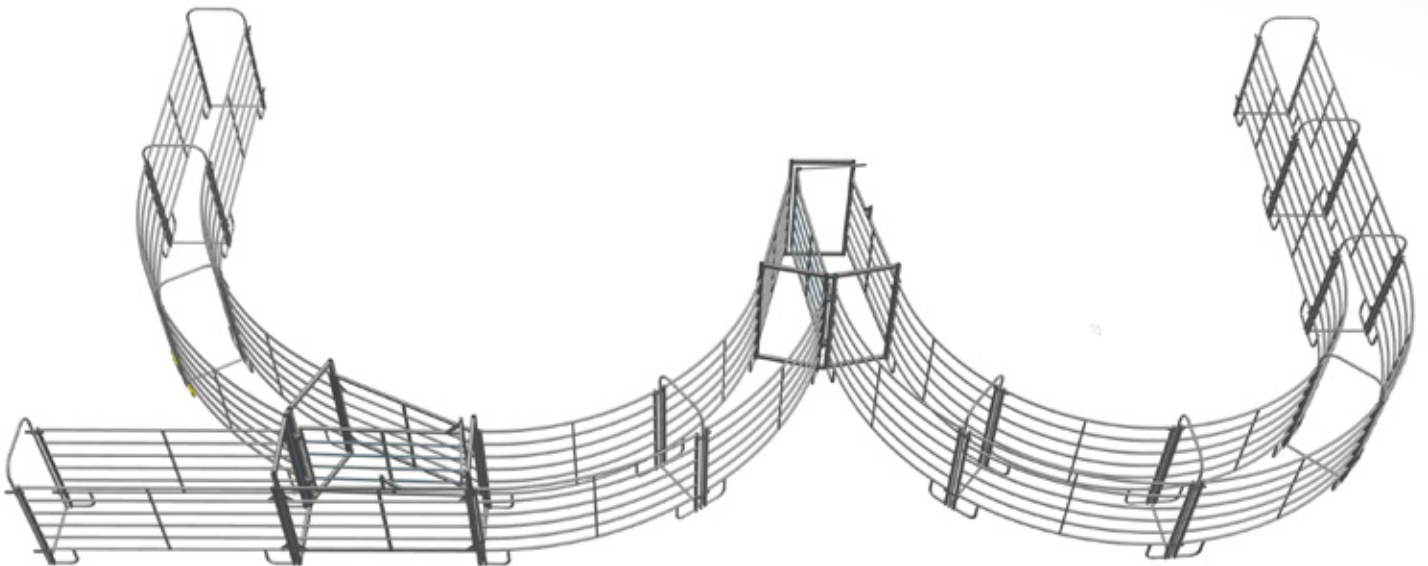


Visit our websites for further information!  
[szarvasmarhatartas.hu/en](http://szarvasmarhatartas.hu/en)



**Complete sorting sweep corral system 8001**  
KM-MV-4-8001

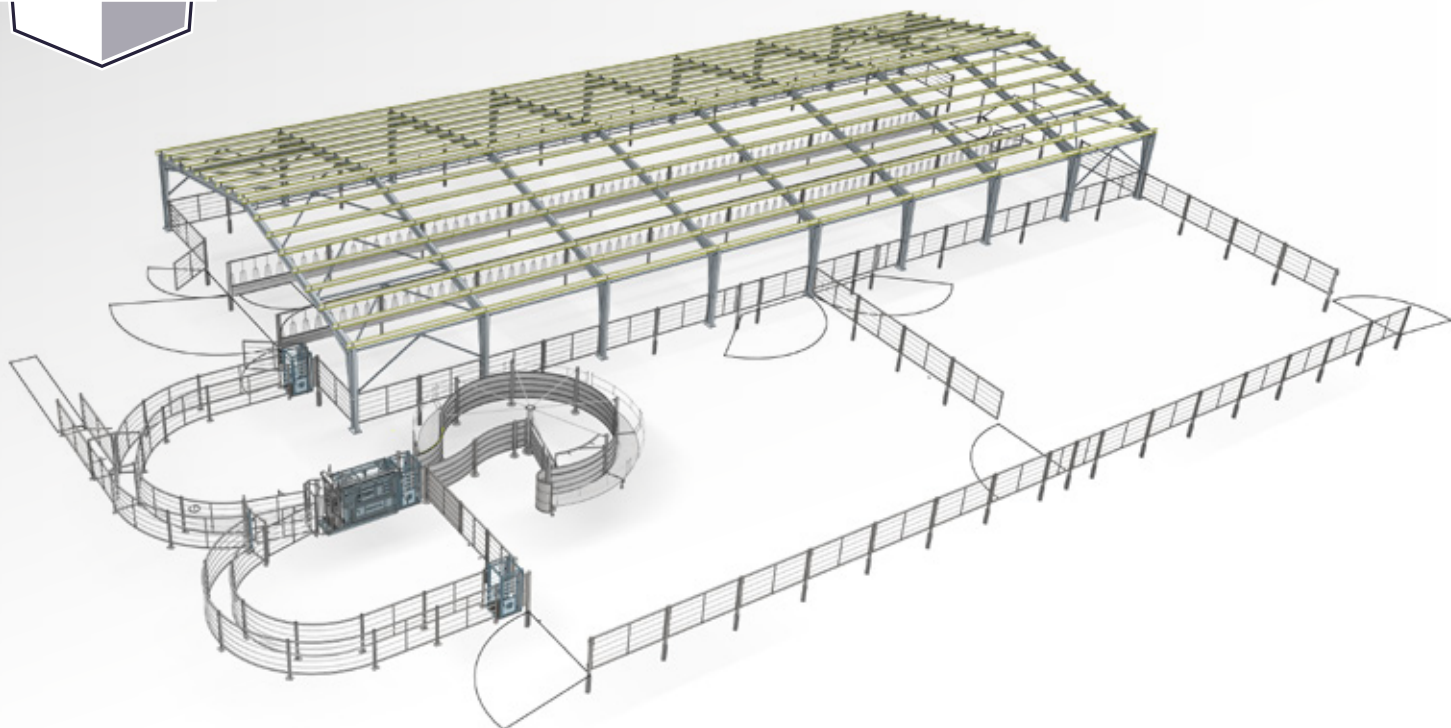
**Crowding tub set with 4 curved panels**  
KM-MV-4-8104



**3 way sorting corral system | KM-MV-4-8106**

KM-MV-4-8001	Complete sorting sweep corral system 8001
KM-MV-4-8002	Complete sorting sweep corral system 8002
KM-MV-4-8003	Complete sorting sweep corral system 8003
KM-MV-4-8102	Crowding tub set with 2 curved panels
KM-MV-4-8104	Crowding tub set with 4 curved panels
KM-MV-4-8106	3 way sorting corral system





**Open barn building with sweep corral system (design and construction)**  
Sizes: 20 m x 48 m x 4 m | Place of fulfillment: **Pusztaföldvár**

## Individual design

**Design and implementation of cattle husbandry technology products / sorting systems even based on individual needs!**

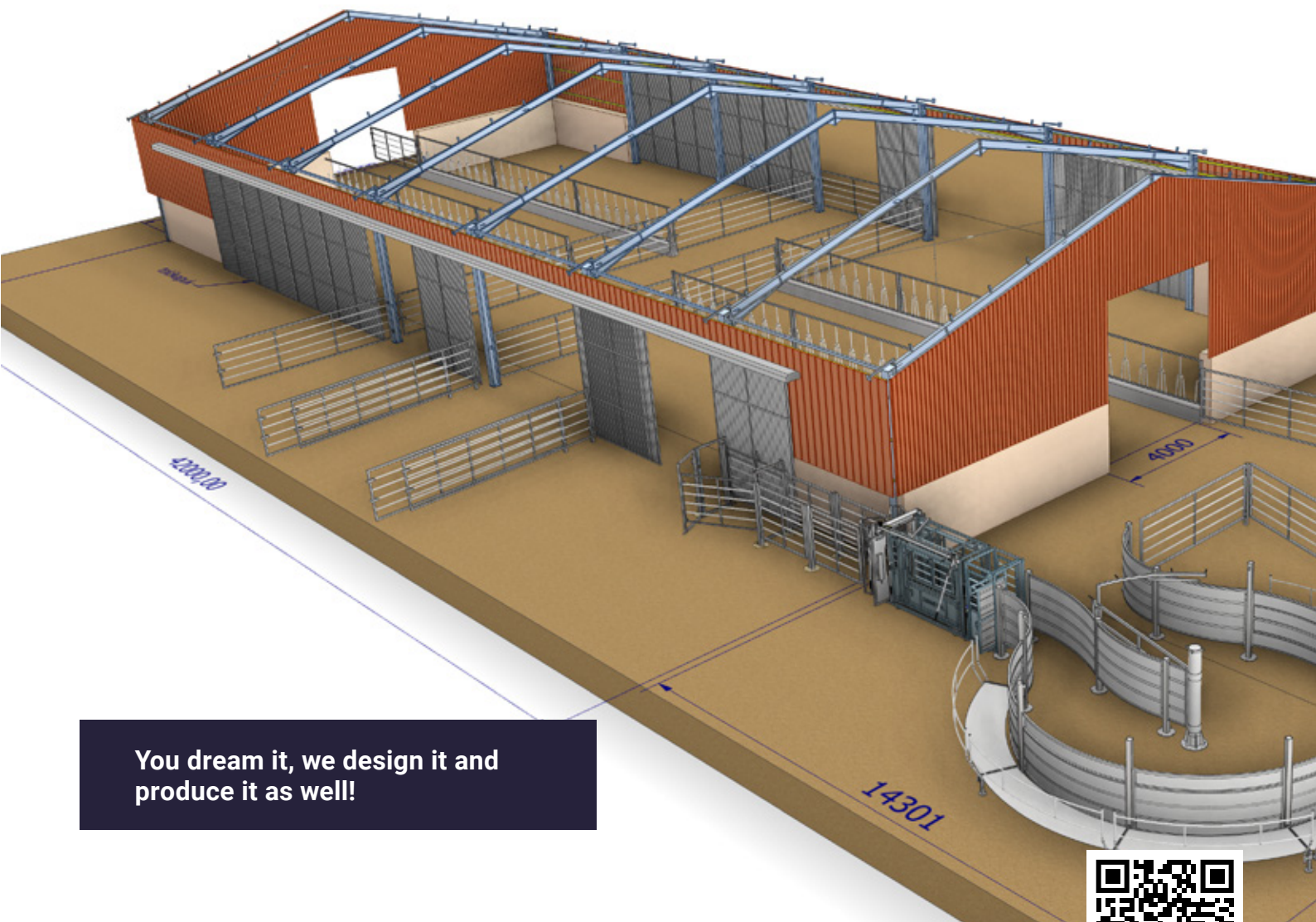
- You dream it, we design it and produce it as well!
- If necessary, we also undertake an on-site survey in order to create the most accurate plans in our 3D modeling CAD software!



Visit our websites for further information!  
[szarvasmarhatartas.hu/en](http://szarvasmarhatartas.hu/en)



**Fixed installation corral system (design and construction)**  
Sizes: 50 m x 85 m | Place of fulfillment: Kiskőrös



You dream it, we design it and produce it as well!





Universal squeeze cattle crush with head bail / head gate, rear entry and sluice gate 6-04 (hot-dip galvanized)  
KM-MV-6-04-H

## Treatment crushes

Ensures the fixation of the animal at the end of the working alley, it has 2 doors on each side, which allow access to various treatments. It is combined with a front grid, which could be opened and closed, to prevent the animal from breaking out and being injured.

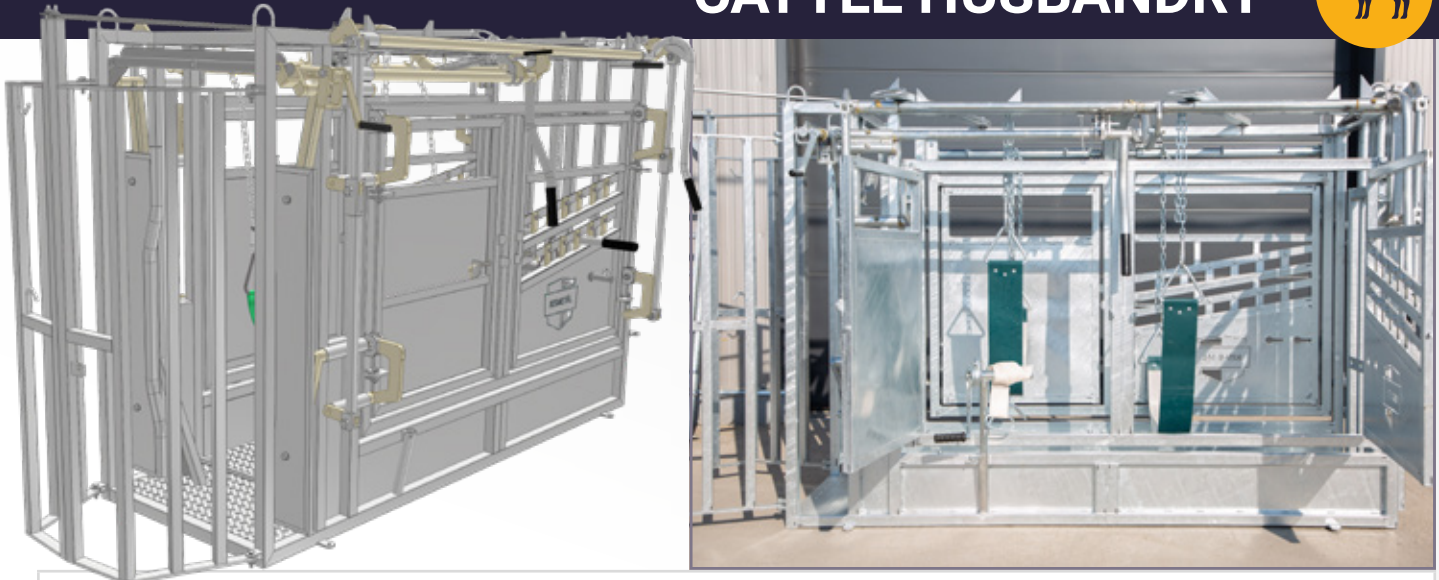
- The size of the head bail / head gate is adjustable, thereby it can be used with most of age groups.
- Our offer also includes the products of the austrian Rosensteiner GmbH.
- Fast, safe, accident free fixing device.
- Hot-dip galvanized design.

The treatment crushes could be expanded with optional items.

**ROSENSTEINER**  
perfekt einfach.



Visit our websites for further information!  
[szarvasmarhatartas.hu/en](http://szarvasmarhatartas.hu/en)



## KM-MV-4 series treatment crushes

KM-MV-4-04-H	Cattle crush with head bail / head gate 4-04 (hot-dip galvanized)
KM-MV-4-05-H	Cattle crush with head bail / head gate, hoof care version 4-05 (hot-dip galvanized)
KM-MV-4-06-H	Universal squeeze cattle crush with head bail / head gate 4-06 (hot-dip galvanized)
KM-MV-4-07-H	Universal squeeze cattle crush with head bail / head gate, hoof care version 4-07 (hot-dip galvanized)

## KM-MV-5 series treatment crushes

KM-MV-5-01-H	Universal squeeze cattle crush with head bail / head gate and sluice gate 5-01 (hot-dip galvanized)
KM-MV-5-02-H	Universal squeeze cattle crush with head bail / head gate, rear entry and sluice gate 5-02 (hot-dip galvanized)

## KM-MV-6 series treatment crushes

KM-MV-6-02-H	Universal squeeze cattle crush with head bail / head gate and sluice gate 6-02 (hot-dip galvanized)
KM-MV-6-04-H	Universal squeeze cattle crush with head bail / head gate, rear entry and sluice gate 6-04 (hot-dip galvanized)
KM-MV-6-02-H-WHC	Universal squeeze cattle crush with head bail / head gate and sluice gate, hoof care version 6-02-WHC (hot-dip galvanized)
KM-MV-6-04-H-WHC	Universal squeeze cattle crush with head bail / head gate, rear entry and sluice gate, hoof care version 6-04-WHC (hot-dip galvanized)

## Rosensteiner treatment crushes

KM-ROSEN-VETPRO	Rosensteiner Vet Pro universal veterinary-operation treatment crush
KM-ROSEN-BULLTS	Rosensteiner Bull Top S cattle hoof trimming and treatment crush
KM-ROSEN-BULLTM	Rosensteiner Bull Top M cattle hoof trimming and treatment crush





Cattle head bail / head gate (hot-dip galvanized)  
KM-MV-4-02-H



Cattle head bail / head gate (hot-dip galvanized - galvanized) | KM-MV-6-01-H

## Head bails / Head gates

The size of the head bail / head gate is adjustable, thereby it can be used with most of age groups. The head bail / head gate is combined with a front grid, which could be opened and closed, to prevent the animal from breaking out and being injured.

- Fast, safe, accident free fixing device. In case of cattle with long horn, we could deliver the head bail / head gate with a larger front grid.
- Hot-dip galvanized design.

KM-MV-4-02-H	Cattle head bail / head gate (hot-dip galvanized)
KM-MV-6-01-H	Cattle head bail / head gate (hot-dip galvanized - galvanized)
KM-MV-6-01WG-H	Cattle head bail / head gate with front grid (hot-dip galvanized - galvanized)
KM-INSZ-4-01-H	3 in 1 calving gate (hot-dip galvanized)







**ROSENSTEINER**  
perfekt einfach.

**Rosensteiner Red 5 hoof trimming crush - Professional**  
KM-ROSEN-RED5P



**Rosensteiner Top 5 hoof trimming crush - Professional**  
KM-ROSEN-TOP5P

## Hoof trimming crushes

**Hoof trimming crushes for individual needs.**

- The products of the Austrian Rosensteiner GmbH offer a solution for hoof care professionals and for trimming the hoof of small-, medium-, and big cattle herds!
- Hot-dip galvanized and powder coated design.

**Most of the products are available in trailer version!**

### Rosensteiner Top 5 series

KM-ROSEN-TOP5B	Rosensteiner Top 5 cattle hoof trimming crush - Basic
KM-ROSEN-TOP5C	Rosensteiner Top 5 cattle hoof trimming crush - Comfort
KM-ROSEN-TOP5P	Rosensteiner Top 5 cattle hoof trimming crush - Professional

### Rosensteiner Red 5 series

KM-ROSEN-RED5B	Rosensteiner Red 5 cattle hoof trimming crush - Basic
KM-ROSEN-RED5C	Rosensteiner Red 5 cattle hoof trimming crush - Comfort
KM-ROSEN-RED5P	Rosensteiner Red 5 cattle hoof trimming crush - Professional

### Rosensteiner Bull Top series

KM-ROSEN-BULLTS	Rosensteiner Bull Top S cattle hoof trimming and treatment crush
KM-ROSEN-BULLTM	Rosensteiner Bull Top M cattle hoof trimming and treatment crush

### Rosensteiner Red Q

KM-ROSEN-REDQ	Rosensteiner Red Q cattle hoof trimming crush
---------------	---

### Rosensteiner Kipp Top series

KM-ROSEN-KT2B	Rosensteiner Kipp Top II cattle hoof trimming crush - Basic
KM-ROSEN-KT2C	Rosensteiner Kipp Top II cattle hoof trimming crush - Comfort
KM-ROSEN-KT2P	Rosensteiner Kipp Top II cattle hoof trimming crush - Professional

### Rosensteiner RS-Q

KM-ROSEN-RSQ	Rosensteiner RS-Q special cattle hoof trimming crush
--------------	--

Visit our websites for further information!  
[kismet.hu/en](http://kismet.hu/en)



## Weighing chassises, weighing structures

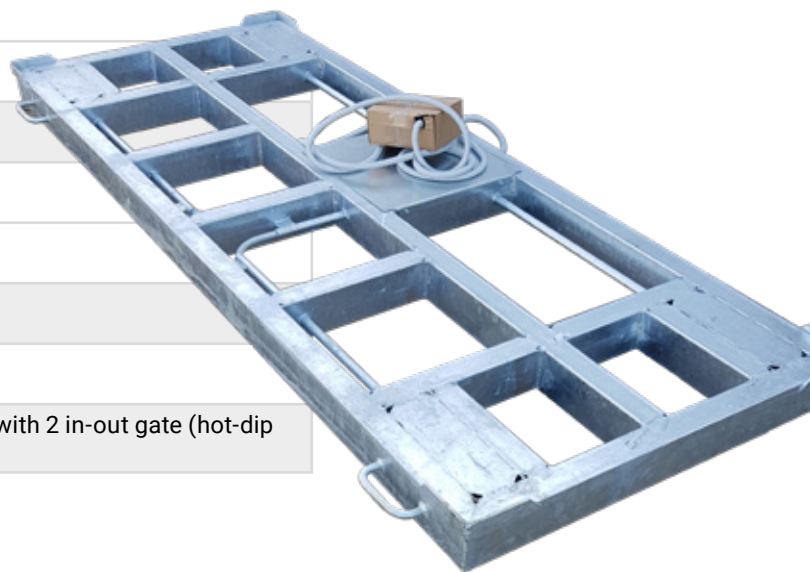
**Weighing crushes and weighing chassises, which completely fulfill the requirements of cattle weighing.**

- The great advantage of the separated chassises, that they function as independent scales as well.
- The products are available as separated devices, respectively as integrated structures as well.
- Hot-dip galvanized design.



**Weighing frame + weighing crush structure with 2 in-out gate (hot-dip galvanized)**  
KM-MG-4-04-H

Weighing chassises	
KM-MG-4-01-H	Hot-dip galvanized weighing frame 01
KM-MG-4-02-H	Hot-dip galvanized weighing frame 02
Weighing crushes	
KM-MG-4-03-H	Cattle weighing crush (hot-dip galvanized)
Weighing structures	
KM-MG-4-04-H	Weighing frame + weighing crush structure with 2 in-out gate (hot-dip galvanized)





**Calf nursery for 15 calves with roof**  
KM-MB-GWR015



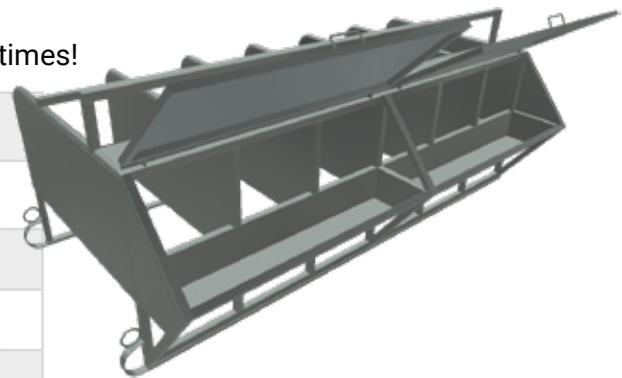
**Calf nursery for 30 calves with roof**  
KM-MB-GWR030

## Calf nurseries

The calf nursery provides the development of the calves in such a way, that the adult animals do not have access to them.

- The width of the hatches on the side element can be adjusted, thanks to the shackled binding.
- The distance of the inlet opening on the tank is adjustable.
- The paddock can be assembled and disassembled with screws, thereby the nursery can be stored space saving. The nursery can be towed by traktor.
- Hot-dip galvanized design.
- The GWR products can be expanded by 15 places multiple times!

KM-MB-TWN01-H	Calf nursery with one-sided feeding option (hot-dip galvanized)
KM-MB-TWN02-H	Calf nursery with two-sided feeding option (hot-dip galvanized)
KM-MB-BOX06-H	Calf nursery box for 6 calves (hot-dip galvanized)
KM-MB-BOX08-H	Calf nursery box for 8 calves (hot-dip galvanized)
KM-MB-BOX10-H	Calf nursery box for 10 calves (hot-dip galvanized)
KM-MB-GWR015	Calf nursery for 15 calves with roof
KM-MB-GWR030	Calf nursery for 30 calves with roof

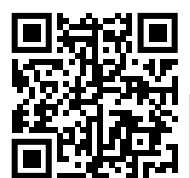


**Calf nursery box for 6 calves**  
KM-MB-BOX06-H



**Calf nursery with two-sided feeding option (hot-dip galvanized) | KM-MB-TWN02-H**

Visit our websites for further information!  
[kismet.hu/en](http://kismet.hu/en)





**Trailer trough designed exclusively for feeding**  
KM-MEV15-24WT

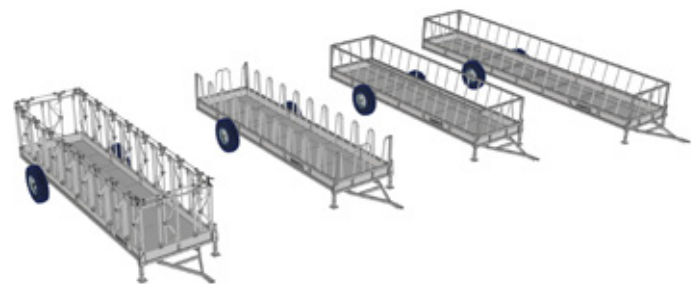


**Longline feeding trough with roof**  
KM-MEV15-20-RAUT01WR

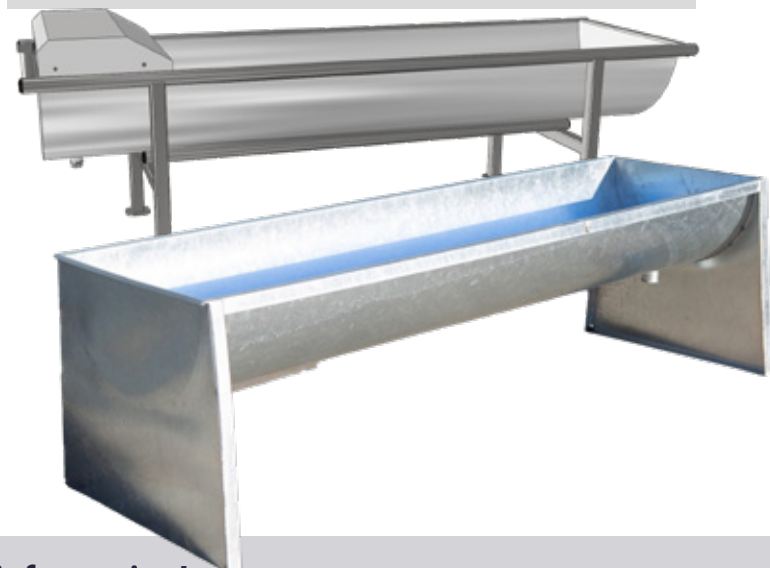
## Feeding- and drinking troughs

Feeding- and drinking troughs, manufactured according to individual needs, in several designs.

- Hot-dip galvanized design.



**Huge longline cattle drinking trough | KM-MIV1520-4-H**



<b>Feeding troughs</b>	<b>Trailer designed and longline products exclusively for feeding</b>
KM-MEV15 series	<b>In roof design as well!</b>
<b>Drinking troughs</b>	<b>Huge longline drinking troughs</b>
KM-MIV1515 series	Trough width: 1500 mm. The trough insert is rolled from 1,5 mm sheet metal. Available lengths: 4; 5; 6 m.
KM-MIV1520 series	Trough width: 1500 mm. The trough insert is rolled from 2 mm sheet metal. Available lengths: 4; 5; 6 m.
KM-MIV1530 series	Trough width: 1500 mm. The trough insert is rolled from 3 mm sheet metal. Available length: 6 m.
<b>Feeding- and drinking troughs</b>	<b>Products can be ordered with plate legs, support legs and sled base</b>
KM-MIV615 series	Trough width: 690 mm. The trough insert is rolled from 1,5 mm sheet metal. Available lengths: 2; 3; 4; 5; 6 m.
KM-MIV620 series	Trough width: 690 mm. The trough insert is rolled from 2 mm sheet metal. Available lengths: 2; 3; 4; 5; 6 m.
KM-MIVM6 series (rotund)	Trough width: 690 mm. The trough insert is rolled from 2 mm sheet metal. Available lengths: 1,25; 2; 4; 5; 6 m.
KM-MIV9 series (wide, rotund)	Trough width: 990 mm. The trough insert is rolled from 2 mm sheet metal. Available lengths: 4; 6 m.



**Visit our websites for further information!**  
[szarvasmarhatartas.hu/en](http://szarvasmarhatartas.hu/en)



**Feeding- and drinking trough with support legs | KM-MIV620-6-H**



**Trailer designed trough exclusively for feeding  
KM-MEV15-20WT-RAILAUT-01**



**Longline feeding trough designed exclusively for  
feeding | KM-MEV15-20**



**Trailer designed trough with roof, exclusively for feeding | KM-MEV15-24WTWR**





Cattle round bale feeder with 12 feeding places and roof ANG01 | KM-ME-4-12ANG01



Cattle round bale feeder with 12 feeding places and roof ANG02 | KM-ME-4-12ANG02

## Round bale feeders

From economic point of view, it is important not to waste quality materials.

- The round bale feeder protects the bale from dirt and trampling loss.
- Hot-dip galvanized design.



Cattle round bale feeder with 12 feeding places and roof, reinforced | KM-ME-4-12RIWR

KM-ME-4-12	Cattle round bale feeder with 12 feeding places
KM-ME-4-12RI	Cattle round bale feeder with 12 feeding places, reinforced
KM-ME-4-12WR	Cattle round bale feeder with 12 feeding places and roof
KM-ME-4-12RIWR	Cattle round bale feeder with 12 feeding places and roof, reinforced
KM-ME-4-12WFC	Cattle round bale feeder with 12 feeding places, fully covered with metal sheets
KM-ME-4-12RIWFC	Cattle round bale feeder with 12 feeding places, reinforced, fully covered with metal sheets
KM-ME-4-16	Cattle round bale feeder with 16 feeding places
KM-ME-4-16RI	Cattle round bale feeder with 16 feeding places, reinforced
KM-ME-4-16RIWFC	Cattle round bale feeder with 16 feeding places, reinforced, fully covered with metal sheets
KM-ME-4-12ANG01	Cattle round bale feeder with 12 feeding places and roof ANG01
KM-ME-4-12ANG02	Cattle round bale feeder with 12 feeding places and roof ANG02
KM-ME-4-12ANG03	Cattle round bale feeder with 12 feeding places and roof ANG03

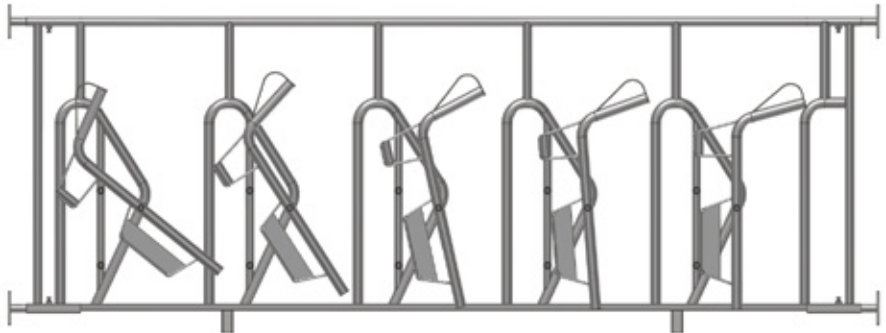


Visit our websites for further information!  
[szarvasmarhatartas.hu/en](http://szarvasmarhatartas.hu/en)



Cattle auto self-locking feed front type 02HL (one feeding place) | KM-ME-4-RAIL02HL

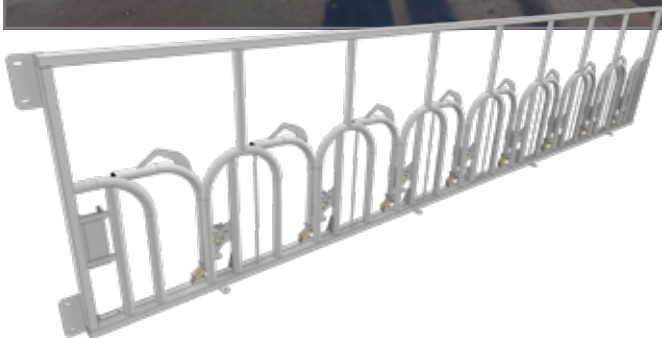
Cattle gravitational neck-restraining feed front type 03HL  
KM-ME-4-RAIL03HL



## Feeder panels

Feeder panels, made exclusively to order based on individual needs.

- Depending on the type we manufacture the products in meters or according to the number of feeding places.
- Hot-dip galvanised design.



KM-ME-4-RAILN	Cattle feeder panel (feeding place)
KM-ME-4-RAILRI	Reinforced cattle feeder panel (feeding place)
KM-ME-4-RAILSK	Cattle feeder panel with diagonal grid (meter)
KM-ME-4-RAILSKADJ	Cattle feeder panel with adjustable diagonal grid (meter)
KM-ME-4-RAIL01HL	Cattle self-locking feed front type 01HL (feeding place)
KM-ME-4-RAIL02HL	Cattle self-locking feed front type 02HL (feeding place)
KM-ME-4-RAIL03HL	Cattle gravitational neck-restraining feed front type 03HL (feeding place)



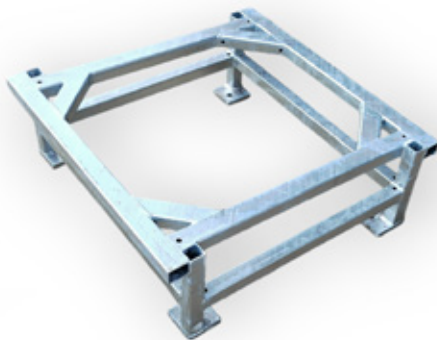


Erinox anti freeze, double ball water trough, 110 l | KM-MI-ERXD110

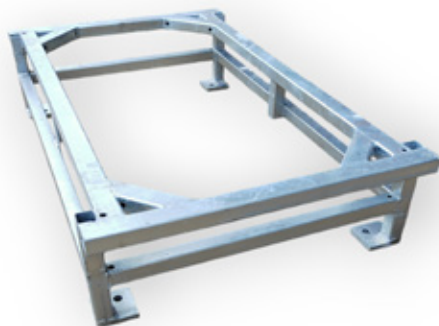
## Ball waterers

### Anti freeze ball waterers by Erinox.

- Prevents water from freezing up to minus 28 Celsius.
- Available in 40 and 110-liter versions.
- Depending on the product, they are suitable for meeting the water needs of 15-40 animals.
- It can be bought with hot-dip galvanized base.



Support stand for Erinox anti freeze water trough (one ball type) | KM-MIT-ERXD40

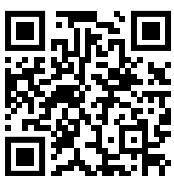


Stand for Erinox anti freeze, double ball water trough KM-MIT-ERXD110



Erinox anti freeze water trough (one ball type), 40 l KM-MI-ERXD40

KM-MI-ERXD40	Erinox anti freeze water trough (one ball type), 40 l.
KM-MI-ERXD110	Erinox anti freeze, double ball water trough, 110 l.
KM-MIT-ERXD40	Support stand for Erinox anti freeze water trough (one ball type)
KM-MIT-ERXD110	Stand for Erinox anti freeze, double ball water trough







## Livestock ramps

Standard sized animal ramps that can be towed by a tractor and moved by hand for safe transport.

- Hot-dip galvanized design.



**Livestock ramp with adjustable ramp height (hot-dip galvanized)**  
KM-MF-4-04-H

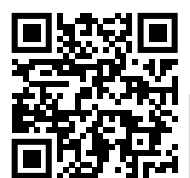


**Livestock ramp with fixed ramp height (hot-dip galvanized) | KM-MF-4-03-H**



**Livestock ramp with adjustable ramp height and side aisle (hot-dip galvanized) | KM-MF-4-04R-H**

KM-MF-4-03-H	Livestock ramp with fixed ramp height (hot-dip galvanized)
KM-MF-4-04-H	Livestock ramp with adjustable ramp height (hot-dip galvanized)
KM-MF-4-04R-H	Livestock ramp with adjustable ramp height and side aisle (hot-dip galvanized)





**Auxiliary display DGT100 (100 mm height, IP68 design)**  
KM-MG-DGT100



**Weighing display DFWLKI**  
KM-MG-DFWLKI



**Weighing display DFWLB**  
KM-MG-DFWLB



**Weighing display 3590EGTCXT01BC**  
KM-MG-3590EGTCXT01BC

## Weighing displays

We provide our clients a wide scale of weighing displays and accessories, specially designed for cattle- and sheep husbandry.

- Digital weighing displays with huge touch screen.



**Auxiliary display DGT60 (60 mm height)**  
KM-MG-DGT60

KM-MG-DFWLB	Weighing display DFWLB (ABS plastic housing with IP68 protection.)
KM-MG-DFWLI	Weighing display DFWLI (5 buttons, stainless housing with IP68 protection.)
KM-MG-DFWLKI	Weighing display DFWLKI (17 buttons, stainless housing with IP68 protection.)
KM-MG-DFWLID-1	Weighing display DFWLID (Stainless housing with IP68 protection, 5 buttons, LCD)
KM-MG-DFWLID-3	Weighing display DFWLID (Stainless housing with IP68 protection, 5 buttons, LCD, built in battery)
KM-MG-3590EXP	Weighing display 3590EXP (ABS plastic housing with IP65 protection, 25 buttons waterproof keyboard.)
KM-MG-3590EXT	Weighing display 3590EXT (Stainless housing with IP68 protection, 25 buttons waterproof keyboard.)
KM-MG-3590EGTXT01BC	Weighing display 3590EGTXT01BC (Stainless housing with IP68 protection, graphic LCD touch screen.)
KM-MG-3590EGTCXT01BC	Weighing display 3590EGTCXT01BC (Stainless housing with IP68 protection, color graphic LCD touch screen.)
KM-MG-DGT60	Auxiliary display DGT60 (60 mm height)
KM-MG-DGT100	Auxiliary display DGT100 (100 mm height, IP68 design)



Visit our websites for further information!  
[szarvasmarhatartas.hu/en](http://szarvasmarhatartas.hu/en)



**Float valve for drinking troughs and water tanks (3/4 inch) | KM-MIVM6-USZJ34**



**Float valve with large float KM-MIV6-USZNU**

## Valves

Our offer also includes a wide range of valves for our drinking troughs, and metal sheet covers belonging to them.

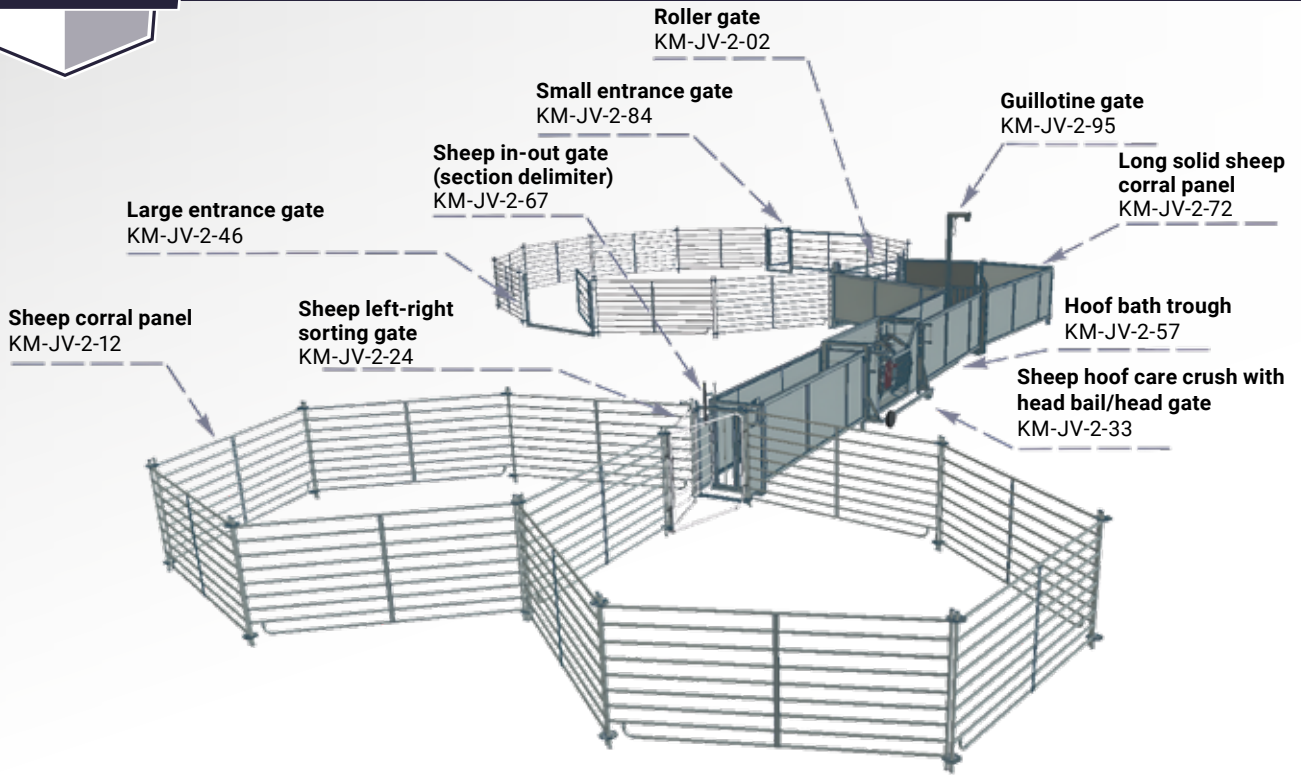


**Float valve with extra high flow + plate housing KM-MIVM6-USZXTRA**

KM-MIVM6-USZJ12	Float valve for drinking troughs and water tanks (1/2 inch) + plate housing
KM-MIVM6-USZJ34	Float valve for drinking troughs and water tanks (3/4 inch) + plate housing
KM-MIVM6-USZNU	Float valve with large float + plate housing
KM-MIVM6-USZXTRA	Float valve with extra high flow + plate housing

The price of the valves, as optional items, can change according to the required plate housing (width of the trough).



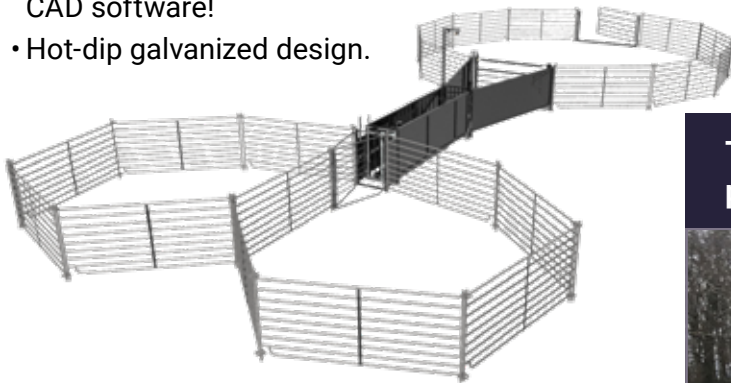


Sheep sorting system 0001 | KM-JV-2-0001

## Corral systems

The sorting corral system has a great importance in the individual treatment of the sheeps, both in terms of vaccination and numbering.

- Design and implementation of sheep husbandry technology products / sorting systems even based on individual needs! You dream it, we design it and produce it as well! If necessary, we also undertake an on-site survey in order to create the most accurate plans in our 3D modeling CAD software!
- Hot-dip galvanized design.



Sheep sorting system 0002 | KM-JV-2-0002

The components of our products can be purchased separately.

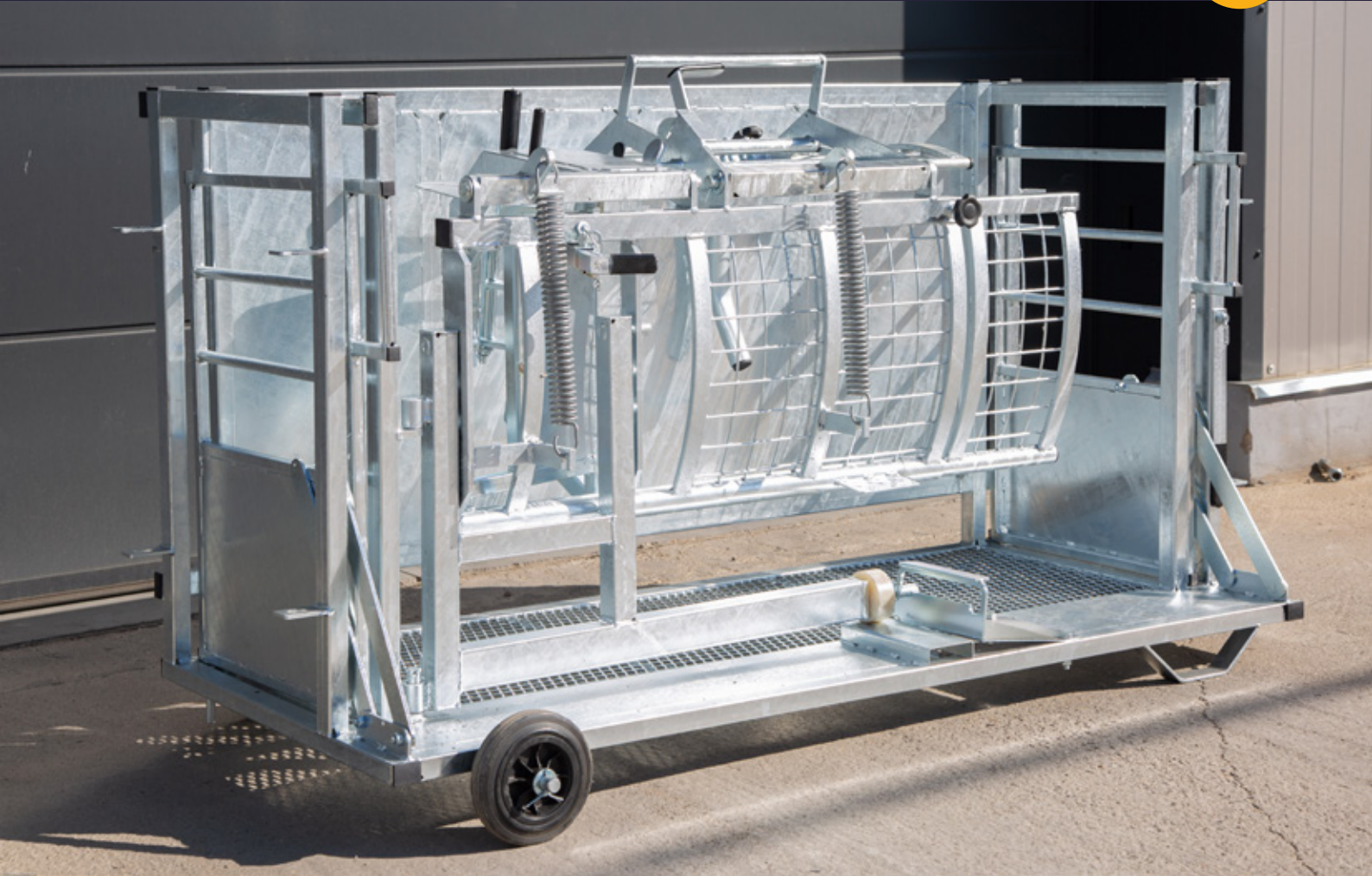


KM-JV-2-0001 Sheep sorting system 0001

KM-JV-2-0002 Sheep sorting system 0002



Visit our websites for further information!  
kismet.hu/en



## Hoof care crush

The sheep crush secures the animal without the risk of injury, so it can be examined and treated.

- Hot-dip galvanized design.



KM-JV-2-33 Hoof care crush with head bail / head gate





Lambing box for 2 mother sheep next to the wall | KM-JB-1-12F

## Lamb nurseries, lambing boxes

The lamb nursery or lamb school provides an opportunity to separate the animals after calving.

- The lamb fence prevents the mother from getting inside to the lambs.
- Hot-dip galvanized design.



Lamb nursery panel (L=1 m) | KM-JB-1-01

### Lamb nurseries

KM-JB-1-01	Lamb nursery panel (L=1 m)
KM-JB-1-02	Lamb nursery panel (L=2 m)
KM-JB-1-03	Lamb nursery panel (L=3 m)

### Lambing boxes

KM-JB-1-11	Lambing box for 1 mother sheep
KM-JB-1-11F	Lambing box for 1 mother sheep next to the wall
KM-JB-1-12	Lambing box for 2 mother sheep
KM-JB-1-12F	Lambing box for 2 mother sheep next to the wall
KM-JB-1-12-L	Lambing box for 2 mother sheep, plated
KM-JB-1-14	Lambing box for 2 mother sheep



The components of our products can be purchased separately.  
[kismetal.hu/en](http://kismetal.hu/en)



Weighing structure for sheeps and pigs (810 mm x 1730 mm) | KM-JM-1-01

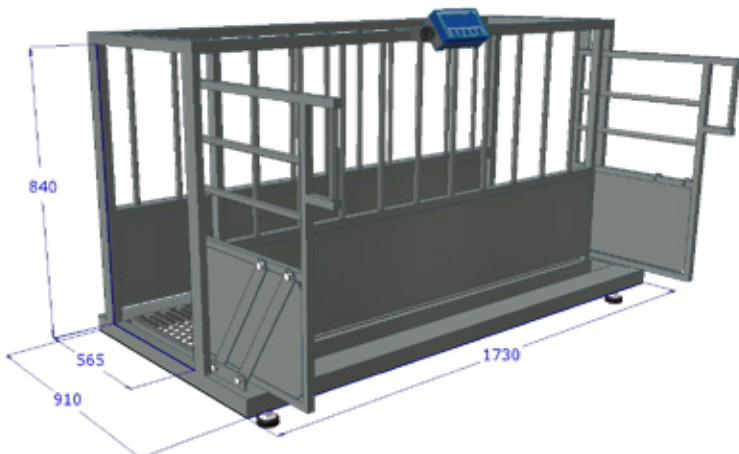
## Scales

Our scales are produced in 300 / 600 / 1500 kg versions with 100 / 200 / 500 g graduations. The side wall is laminated at the bottom and latticed at the top.

- Easy to open / close doors at the front and back.
- Alloy steel cells (optionally acid-resistant cells).
- Hot-dip galvanized design.



KM-JM-1-01	Weighing structure for sheeps and pigs (810 mm x 1730 mm)
KM-JM-1-02	Weighing structure for sheeps and pigs (1200 mm x 2400 mm)





Hay rack with waste tray (L=2 m) | KM-JE-3-22

## Round bale feeders, hay racks, troughs

From economic point of view, it is important not to waste quality materials.

- Our round bale feeders, hay racks, and self feeders provides an opportunity to save fodder.
- Our offer also includes troughs suitable for feeding and watering sheep.
- Hot-dip galvanized design.



Sheep round bale feeder with roof (D=1800 mm)  
KM-JE-3T-18

Round bale feeders	
KM-JE-3-14	Sheep round bale feeder (D=1400 mm)
KM-JE-3-16	Sheep round bale feeder (D=1600 mm)
KM-JE-3-18	Sheep round bale feeder (D=1800 mm)
KM-JE-3T-14	Sheep round bale feeder with roof (D=1400 mm)
KM-JE-3T-16	Sheep round bale feeder with roof (D=1600 mm)
KM-JE-3T-18	Sheep round bale feeder with roof (D=1800 mm)
Hay racks	
KM-JE-3-20	Hay rack (L=2 m)
KM-JE-3-22	Hay rack with waste tray (L=2 m)
KM-JE-3-24	Hay rack with wide fodder- and waste tray (L=2 m)
Self feeders	
KM-JE-3-31	Double-sided sheep self feeder with tank (L=1 m, without roof)
KM-JE-3-31WR	Double-sided sheep self feeder with tank (L=1 m, with roof)
KM-JE-3-32	Double-sided sheep self feeder with tank (L=2 m, without roof)
KM-JE-3-32WR	Double-sided sheep self feeder with tank (L=2 m, with roof)
KM-JE-3-32OS	Sheep self feeder with tank (L=2 m, without roof)
KM-JE-3-32OSWR	Sheep self feeder with tank (L=2 m, with roof)
KM-JE-3-LSHH	Salt lick holder



The components of our products can be purchased separately.  
[kismetal.hu/en](http://kismetal.hu/en)

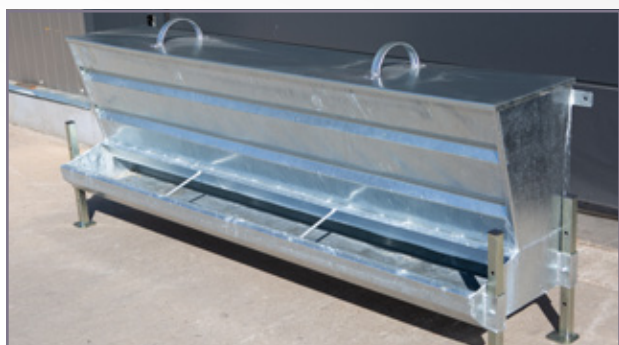




Troughs	
KM-JE-3-420L	Sheep feeding trough with plate legs (L=2 m)
KM-JE-3-420H	Sheep feeding trough with support legs (L=2 m)
KM-JE-3-430L	Sheep feeding trough with plate legs (L=3 m)
KM-JE-3-430H	Sheep feeding trough with support legs (L=3 m)
KM-JE-3-5125L	Sheep drinking trough with plate legs (L=1,25 m)
KM-JE-3-5125H	Sheep drinking trough with support legs (L=1,25 m)
KM-JE-3-5200L	Sheep drinking trough with plate legs (L=2 m)
KM-JE-3-5200H	Sheep drinking trough with support legs (L=2 m)
KM-JE-3-5250L	Sheep drinking trough with plate legs (L=2,5 m)
KM-JE-3-5250H	Sheep drinking trough with support legs (L=2,5 m)
KM-JE-3-5375L	Sheep drinking trough with plate legs (L=3,75 m)
KM-JE-3-5375H	Sheep drinking trough with support legs (L=3,75 m)
KM-JE-3-5500H	Sheep drinking trough with support legs (L=5 m)



**Sheep drinking trough with support legs (L=2 m)**  
KM-JE-3-5200H



**Sheep self feeder with tank (L=2 m, with roof)**  
KM-JE-3-320SWR



## Milking stands

**Milking stand, made exclusively to order based on individual needs.**

- Hot-dip galvanized design.

KM-JF-1-02

Sheep  
milking  
stand



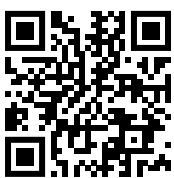


Open sided hangar 12 m x 30 m x 4 m | Place of fulfillment: Dunaharaszti

## Open-sided light structure halls

We undertake the complete construction of hall buildings, from planning, through the completion of the licensing procedure, to turnkey handover!

Machine- and crop storages, other agricultural buildings, industrial halls and car washing structures can also be found among our references!



Visit our websites for further information and request an offer!  
[kismetal.hu/en](http://kismetal.hu/en)

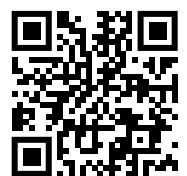


**Complete logistic ramp coverage 66 m x 8,5 m x 4,5 m**  
Place of fulfillment: **Szolnok**

**Visit our websites for further information!**



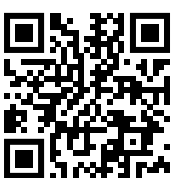
**Open machine-shed 12 m x 26,5 m x 4,5 m** | Place of fulfillment: **Szalmatercs**





Machine and crop storage 13 m x 24 m x 5 m | Place of fulfillment: Detk

## Closed machine storages and barn buildings



Visit our websites for further information and request an offer!  
[kismetal.hu/en](http://kismetal.hu/en)



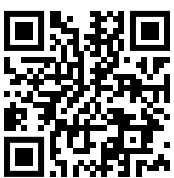
**Closed agricultural machine-shed 8 m x 22 m x 3,5 m**  
Place of fulfillment: **Zagyvarékas**





Open barn building with sweep corral system 20 m x 48 m x 4 m | Place of fulfillment: Pusztaföldvár

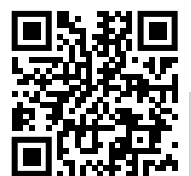
## Closed machine storages and barn buildings



Visit our websites for further information and request an offer!  
[kismetal.hu/en](http://kismetal.hu/en)



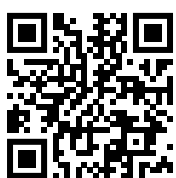
Partially open agricultural machine-shed 8 m x 30 m x 3,5 m | Place of fulfillment: Tiszaderzs





Closed hangar 15 m x 20 m x 5 m | Place of fulfillment: Kápolnásnyék

## Closed machine storages and barn buildings



Visit our websites for further information and request an offer!  
[kismet.hu/en](http://kismet.hu/en)





Crop warehouse 15 m x 52 m x 4,8 m | Place of fulfillment: **Almamellék**

## Crop storage halls



Visit our websites for further information and request an offer!  
[kismet.hu/en](http://kismet.hu/en)



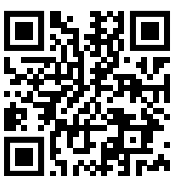


Agricultural warehouse 20 m x 48 m x 5 m | Place of fulfillment: Szigetcsép

## Crop storage halls



Agricultural warehouse | Place of fulfillment: Kecskemét



Visit our websites for further information and request an offer!  
[kismetal.hu/en](http://kismetal.hu/en)

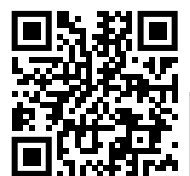


**Agricultural warehouse 24 m x 45 m x 5,3 m | Place of fulfillment: Visznek**



**Crop storage hall with front roof | Place of fulfillment: Medgyesegyháza**

Visit our websites for further information and request an offer!  
[kismetal.hu/en](http://kismetal.hu/en)





Restoration office and workshop hall 12 m x 45 m x 4,5 m | Place of fulfillment: Pécel

## Sandwich-paneled halls



Visit our websites for further information and request an offer!  
[kismetal.hu/en](http://kismetal.hu/en)



Light structure car wash building with 3 stations | Place of fulfillment: Heves

## Car wash buildings



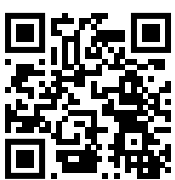
Visit our websites for further information and request an offer!  
[kismet.hu/en](http://kismet.hu/en)





## Tents for universal use

Tents made to measure according to individual needs.



Visit our websites for further information and request an offer!  
[kismetal.hu/en](http://kismetal.hu/en)



## House type industrial tents

Article number:	Dimensions (m):	Data:
KM-UTH-59	W.: 6,1 L.: 9,76 H.: 4,88	Base area: 59 m <sup>2</sup> PVC tarp: 750 g/m <sup>2</sup> Double tubing: 40 x 1,5 mm - 40 x 1,5 mm
KM-UTH-59-0	W.: 6,1 L.: 9,76 H.: 4,88	Base area: 59 m <sup>2</sup> PVC tarp: 750 g/m <sup>2</sup> Double tubing: 40 x 1,5 mm - 40 x 1,5 mm
KM-UTH-74	W.: 6,1 L.: 12,2 H.: 4,88	Base area: 74 m <sup>2</sup> PVC tarp: 750 g/m <sup>2</sup> Double tubing: 40 x 1,5 mm - 40 x 1,5 mm
KM-UTH-111	W.: 9,15 L.: 12,2 H.: 6,1	Base area: 111 m <sup>2</sup> PVC tarp: 750 g/m <sup>2</sup> Double tubing: 48 x 1,5 mm - 48 x 1,5 mm
KM-UTH-139	W.: 9,15 L.: 15,25 H.: 6,1	Base area: 139 m <sup>2</sup> PVC tarp: 750 g/m <sup>2</sup> Double tubing: 48 x 1,5 mm - 48 x 1,5 mm
KM-UTH-167	W.: 9,15 L.: 18,3 H.: 6,1	Base area: 167 m <sup>2</sup> PVC tarp: 750 g/m <sup>2</sup> Double tubing: 48 x 1,5 mm - 48 x 1,5 mm
KM-UTH-223	W.: 9,15 L.: 24,4 H.: 6,1	Base area: 223 m <sup>2</sup> PVC tarp: 750 g/m <sup>2</sup> Double tubing: 48 x 1,5 mm - 48 x 1,5 mm
KM-UTH-122	W.: 10 L.: 12,2 H.: 5,2	Base area: 122 m <sup>2</sup> PVC tarp: 750 g/m <sup>2</sup> Double tubing: 48 x 1,5 mm - 48 x 1,5 mm
KM-UTH-122_2	W.: 10 L.: 12,2 H.: 6,1	Base area: 122 m <sup>2</sup> PVC tarp: 750 g/m <sup>2</sup> Double tubing: 60 x 1,5 mm - 60 x 1,5 mm
KM-UTH-122-0	W.: 10 L.: 12,2 H.: 6,1	Base area: 122 m <sup>2</sup> PVC tarp: 750 g/m <sup>2</sup> Double tubing: 60 x 1,5 mm - 60 x 1,5 mm
KM-UTH-152	W.: 10 L.: 15,25 H.: 5,2	Base area: 152 m <sup>2</sup> PVC tarp: 750 g/m <sup>2</sup> Double tubing: 48 x 1,5 mm - 48 x 1,5 mm
KM-UTH-183	W.: 10 L.: 18,3 H.: 5,2	Base area: 183 m <sup>2</sup> PVC tarp: 750 g/m <sup>2</sup> Double tubing: 48 x 1,5 mm - 48 x 1,5 mm
KM-UTH-183_2	W.: 10 L.: 18,3 H.: 6,1	Base area: 183 m <sup>2</sup> PVC tarp: 750 g/m <sup>2</sup> Double tubing: 60 x 1,5 mm - 60 x 1,5 mm
KM-UTH-183-0	W.: 10 L.: 18,3 H.: 6,1	Base area: 183 m <sup>2</sup> PVC tarp: 750 g/m <sup>2</sup> Double tubing: 60 x 1,5 mm - 60 x 1,5 mm
KM-UTH-244	W.: 10 L.: 24,4 H.: 5,2	Base area: 244 m <sup>2</sup> PVC tarp: 750 g/m <sup>2</sup> Double tubing: 48 x 1,5 mm - 48 x 1,5 mm
KM-UTH-244_2	W.: 10 L.: 24,4 H.: 6,1	Base area: 244 m <sup>2</sup> PVC tarp: 750 g/m <sup>2</sup> Double tubing: 60 x 1,5 mm - 60 x 1,5 mm
KM-UTH-244-0	W.: 10 L.: 24,4 H.: 6,1	Base area: 244 m <sup>2</sup> PVC tarp: 750 g/m <sup>2</sup> Double tubing: 60 x 1,5 mm - 60 x 1,5 mm
KM-UTH-223_2	W.: 12,2 L.: 18,3 H.: 6,4	Base area: 223 m <sup>2</sup> PVC tarp: 750 g/m <sup>2</sup> Double tubing: 60 x 1,5 mm - 60 x 1,5 mm
KM-UTH-223_3	W.: 12,2 L.: 18,3 H.: 7	Base area: 223 m <sup>2</sup> PVC tarp: 750 g/m <sup>2</sup> Double tubing: 60 x 1,5 mm - 60 x 1,5 mm
KM-UTH-297	W.: 12,2 L.: 24,4 H.: 6,4	Base area: 297 m <sup>2</sup> PVC tarp: 750 g/m <sup>2</sup> Double tubing: 60 x 1,5 mm - 60 x 1,5 mm
KM-UTH-297_2	W.: 12,2 L.: 24,4 H.: 7	Base area: 297 m <sup>2</sup> PVC tarp: 750 g/m <sup>2</sup> Double tubing: 60 x 1,5 mm - 60 x 1,5 mm
KM-UTH-372	W.: 15,25 L.: 24,4 H.: 7	Base area: 372 m <sup>2</sup> PVC tarp: 900 g/m <sup>2</sup> Double tubing: 60 x 1,8 mm - 60 x 1,5 mm
KM-UTH-465	W.: 15,25 L.: 30,5 H.: 7	Base area: 465 m <sup>2</sup> PVC tarp: 900 g/m <sup>2</sup> Double tubing: 60 x 1,8 mm - 60 x 1,5 mm
KM-UTH-558	W.: 15,25 L.: 36,6 H.: 7	Base area: 558 m <sup>2</sup> PVC tarp: 900 g/m <sup>2</sup> Double tubing: 60 x 1,8 mm - 60 x 1,5 mm
KM-UTH-697	W.: 15,25 L.: 45,75 H.: 7	Base area: 697 m <sup>2</sup> PVC tarp: 900 g/m <sup>2</sup> Double tubing: 60 x 1,8 mm - 60 x 1,5 mm
KM-UTH-446	W.: 18,3 L.: 24,4 H.: 7,6	Base area: 446 m <sup>2</sup> PVC tarp: 900 g/m <sup>2</sup> Double tubing: 60 x 1,8 mm - 60 x 1,5 mm
KM-UTH-558_2	W.: 18,3 L.: 30,5 H.: 7,6	Base area: 558 m <sup>2</sup> PVC tarp: 900 g/m <sup>2</sup> Double tubing: 60 x 1,8 mm - 60 x 1,5 mm
KM-UTH-669	W.: 18,3 L.: 36,6 H.: 7,6	Base area: 669 m <sup>2</sup> PVC tarp: 900 g/m <sup>2</sup> Double tubing: 60 x 1,8 mm - 60 x 1,5 mm
KM-UTH-651	W.: 21,35 L.: 30,5 H.: 8,5	Base area: 651 m <sup>2</sup> PVC tarp: 900 g/m <sup>2</sup> Double tubing: 76 x 2 mm - 60 x 1,5 mm
KM-UTH-781	W.: 21,35 L.: 36,6 H.: 8,5	Base area: 781 m <sup>2</sup> PVC tarp: 900 g/m <sup>2</sup> Double tubing: 76 x 2 mm - 60 x 1,5 mm
KM-UTH-976	W.: 21,35 L.: 45,75 H.: 8,5	Base area: 976 m <sup>2</sup> PVC tarp: 900 g/m <sup>2</sup> Double tubing: 76 x 2 mm - 60 x 1,5 mm
KM-UTH-1302	W.: 21,35 L.: 61 H.: 8,5	Base area: 1302 m <sup>2</sup> PVC tarp: 900 g/m <sup>2</sup> Double tubing: 76 x 2 mm - 60 x 1,5 mm

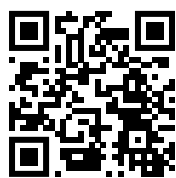


### Semicircular tents

Article number:	Dimensions (m):	Comments:	Data:
KM-UTR-37_Z	W.: 6,1 L.: 6,1 H.: 3,66	with zipper	Base area: 37 m <sup>2</sup> PVC tarp: 650 g/m <sup>2</sup> Simple tubing: 70 x 42 x 1,5 - 42 x 1,2 mm
KM-UTR-37_D	W.: 6,1 L.: 6,1 H.: 3,66	with door	Base area: 37 m <sup>2</sup> PVC tarp: 650 g/m <sup>2</sup> Simple tubing: 70 x 42 x 1,5 - 42 x 1,2 mm
KM-UTR-55_Z	W.: 6,1 L.: 9,15 H.: 3,66	with zipper	Base area: 55 m <sup>2</sup> PVC tarp: 650 g/m <sup>2</sup> Simple tubing: 70 x 42 x 1,5 - 42 x 1,2 mm
KM-UTR-55_D	W.: 6,1 L.: 9,15 H.: 3,66	with door	Base area: 55 m <sup>2</sup> PVC tarp: 650 g/m <sup>2</sup> Simple tubing: 70 x 42 x 1,5 - 42 x 1,2 mm
KM-UTR-78_Z	W.: 6,1 L.: 12,8 H.: 3,66	with zipper	Base area: 78 m <sup>2</sup> PVC tarp: 650 g/m <sup>2</sup> Simple tubing: 70 x 42 x 1,5 - 42 x 1,2 mm
KM-UTR-78_D	W.: 6,1 L.: 12,8 H.: 3,66	with door	Base area: 78 m <sup>2</sup> PVC tarp: 650 g/m <sup>2</sup> Simple tubing: 70 x 42 x 1,5 - 42 x 1,2 mm
KM-UTR-109	W.: 9,15 L.: 12 H.: 4,5		Base area: 109 m <sup>2</sup> PVC tarp: 750 g/m <sup>2</sup> Simple tubing: 70 x 42 x 2 - 40 x 1,5 mm
KM-UTR-146	W.: 9,15 L.: 16 H.: 4,5		Base area: 146 m <sup>2</sup> PVC tarp: 750 g/m <sup>2</sup> Simple tubing: 70 x 42 x 2 - 40 x 1,5 mm
KM-UTR-183	W.: 9,15 L.: 20 H.: 4,5		Base area: 183 m <sup>2</sup> PVC tarp: 750 g/m <sup>2</sup> Simple tubing: 70 x 42 x 2 - 40 x 1,5 mm
KM-UTR-237	W.: 9,15 L.: 26 H.: 4,5		Base area: 237 m <sup>2</sup> PVC tarp: 750 g/m <sup>2</sup> Simple tubing: 70 x 42 x 2 - 40 x 1,5 mm
KM-UTR-146_2	W.: 12,2 L.: 12 H.: 6,1		Base area: 146 m <sup>2</sup> PVC tarp: 750 g/m <sup>2</sup> Simple tubing: 86 x 56 x 2 - 48 x 1,5 mm
KM-UTR-219	W.: 12,2 L.: 18 H.: 6,1		Base area: 219 m <sup>2</sup> PVC tarp: 750 g/m <sup>2</sup> Simple tubing: 86 x 56 x 2 - 48 x 1,5 mm
KM-UTR-297_WOF	W.: 12,2 L.: 24,4 H.: 6,1	without fronts	Base area: 297 m <sup>2</sup> PVC tarp: 750 g/m <sup>2</sup> Simple tubing: 86 x 56 x 2 - 48 x 1,5 mm
KM-UTR-297	W.: 12,2 L.: 24,4 H.: 6,1		Base area: 297 m <sup>2</sup> PVC tarp: 750 g/m <sup>2</sup> Simple tubing: 86 x 56 x 2 - 48 x 1,5 mm
KM-UTR-366	W.: 12,2 L.: 30 H.: 6,1		Base area: 366 m <sup>2</sup> PVC tarp: 750 g/m <sup>2</sup> Simple tubing: 86 x 56 x 2 - 48 x 1,5 mm

### Livestock tents

Article number:	Dimensions (m):	Data:
KM-LST-16	W.: 4 L.: 4 H.: 3,15	Base area: 16 m <sup>2</sup> PVC tarp: 750 g/m <sup>2</sup> Szimpla vasalat: 60 x 1,8 - 60 x 1,5 mm Weight: 550 kg
KM-LST-36	W.: 6 L.: 6 H.: 3,7	Base area: 36 m <sup>2</sup> PVC tarp: 750 g/m <sup>2</sup> Szimpla vasalat: 60 x 1,8 - 60 x 1,5 mm Weight: 700 kg
KM-LST-64	W.: 8 L.: 8 H.: 4	Base area: 64 m <sup>2</sup> PVC tarp: 750 g/m <sup>2</sup> Szimpla vasalat: 60 x 1,8 - 60 x 1,5 mm Weight: 990 kg
KM-LST-100	W.: 10 L.: 10 H.: 4,5	Base area: 100 m <sup>2</sup> PVC tarp: 900 g/m <sup>2</sup> Latticed tubing: 60 x 1,8 - 60 x 1,5 mm Weight: 1680 kg
KM-LST-144	W.: 12 L.: 12 H.: 5	Base area: 144 m <sup>2</sup> PVC tarp: 900 g/m <sup>2</sup> Latticed tubing: 60 x 1,8 - 60 x 1,5 mm Weight: 2250 kg







### Aluminium structure storage tents

Article number:	Dimensions (m):	Data:
KM-UAST-90	W.: 6 L.: 15 H.: 4 / 5,2	Base area: 90 m <sup>2</sup> PVC tarp roof / sides: 850 / 650 g/m <sup>2</sup> Structure: 166 x 88 x 3 mm
KM-UAST-150	W.: 10 L.: 15 H.: 4 / 5,8	Base area: 150 m <sup>2</sup> PVC tarp roof / sides: 850 / 650 g/m <sup>2</sup> Structure: 166 x 88 x 3 mm
KM-UAST-200	W.: 10 L.: 20 H.: 4 / 5,8	Base area: 200 m <sup>2</sup> PVC tarp roof / sides: 850 / 650 g/m <sup>2</sup> Structure: 166 x 88 x 3 mm
KM-UAST-480	W.: 12 L.: 40 H.: 4 / 6,5	Base area: 480 m <sup>2</sup> PVC tarp roof / sides: 850 / 650 g/m <sup>2</sup> Structure: 166 x 88 x 3 mm
KM-UAST-300	W.: 15 L.: 20 H.: 4 / 6,5	Base area: 300 m <sup>2</sup> PVC tarp roof / sides: 850 / 650 g/m <sup>2</sup> Structure: 166 x 88 x 3 mm
KM-UAST-375	W.: 15 L.: 25 H.: 4 / 6,5	Base area: 375 m <sup>2</sup> PVC tarp roof / sides: 850 / 650 g/m <sup>2</sup> Structure: 166 x 88 x 3 mm
KM-UAST-450	W.: 15 L.: 30 H.: 4 / 6,5	Base area: 450 m <sup>2</sup> PVC tarp roof / sides: 850 / 650 g/m <sup>2</sup> Structure: 166 x 88 x 3 mm
KM-UAST-600	W.: 15 L.: 40 H.: 4 / 6,5	Base area: 600 m <sup>2</sup> PVC tarp roof / sides: 850 / 650 g/m <sup>2</sup> Structure: 166 x 88 x 3 mm
KM-UAST-750	W.: 15 L.: 50 H.: 4 / 6,5	Base area: 750 m <sup>2</sup> PVC tarp roof / sides: 850 / 650 g/m <sup>2</sup> Structure: 166 x 88 x 3 mm

### Aluminium structure event tents

Article number:	Dimensions (m):	Data:
KM-UAET-9	W.: 3 L.: 3 H.: 2,5 / 4,2	Base area: 9 m <sup>2</sup> PVC tarp : 850 g/m <sup>2</sup> Structure: 65 x 65 x 2,5 mm
KM-UAET-16	W.: 4 L.: 4 H.: 2,5 / 4,7	Base area: 16 m <sup>2</sup> PVC tarp: 850 g/m <sup>2</sup> Structure: 65 x 65 x 2,5 mm
KM-UAET-25	W.: 5 L.: 5 H.: 2,5 / 5,2	Base area: 25 m <sup>2</sup> PVC tarp: 850 g/m <sup>2</sup> Structure: 65 x 65 x 2,5 mm
KM-UAET-36	W.: 6 L.: 6 H.: 2,5 / 5,8	Base area: 36 m <sup>2</sup> PVC tarp: 850 g/m <sup>2</sup> Structure: 65 x 65 x 2,5 mm
KM-UAET-54	W.: 6 L.: 9 H.: 2,5 / 3,6	Base area: 54 m <sup>2</sup> PVC tarp: 850 g/m <sup>2</sup> Structure: 84 x 48 x 3 mm
KM-UAET-72	W.: 6 L.: 12 H.: 2,5 / 3,6	Base area: 72 m <sup>2</sup> PVC tarp: 850 g/m <sup>2</sup> Structure: 84 x 48 x 3 mm
KM-UAET-90	W.: 6 L.: 15 H.: 2,5 / 3,6	Base area: 90 m <sup>2</sup> PVC tarp: 850 g/m <sup>2</sup> Structure: 84 x 48 x 3 mm
KM-UAET-150	W.: 10 L.: 15 H.: 2,5 / 4,5	Base area: 150 m <sup>2</sup> PVC tarp: 850 g/m <sup>2</sup> Structure: 122 x 68 x 3 mm
KM-UAET-200	W.: 10 L.: 20 H.: 2,5 / 4,5	Base area: 200 m <sup>2</sup> PVC tarp: 850 g/m <sup>2</sup> Structure: 122 x 68 x 3 mm
KM-UAET-250	W.: 10 L.: 25 H.: 2,5 / 4,5	Base area: 250 m <sup>2</sup> PVC tarp: 850 g/m <sup>2</sup> Structure: 122 x 68 x 3 mm
KM-UAET-300	W.: 10 L.: 30 H.: 2,5 / 4,5	Base area: 300 m <sup>2</sup> PVC tarp: 850 g/m <sup>2</sup> Structure: 122 x 68 x 3 mm
KM-UAET-375	W.: 15 L.: 25 H.: 3,5 / 5,5	Base area: 375 m <sup>2</sup> PVC tarp: 850 g/m <sup>2</sup> Structure: 122 x 68 x 3 mm
KM-UAET-375_2	W.: 15 L.: 25 H.: 4 / 6,5	Base area: 375 m <sup>2</sup> PVC tarp: 850 g/m <sup>2</sup> Structure: 166 x 88 x 3 mm
KM-UAET-450	W.: 15 L.: 30 H.: 4 / 6,5	Base area: 450 m <sup>2</sup> PVC tarp: 850 g/m <sup>2</sup> Structure: 166 x 88 x 3 mm
KM-UAET-10_HEX	W.: 3 L.: 3 H.: 2,5 / 3,7	Hexagon, Base area: 10 m <sup>2</sup> PVC tarp: 850 g/m <sup>2</sup> Structure: 84 x 48 x 3 mm



Visit our websites for further information and request an offer!  
[kismetalsator.hu/en](http://kismetalsator.hu/en)





## Steel shelving systems for warehousing



Article number:	Dimensions (mm):	Name:	Data:
KM-STSHSY-ST-01	W.: 600 L.: 2000 H.: 2000	Steel shelving system for warehousing	4 pieces of shelves, 2 pieces of legs
KM-STSHSY-ST_AL	H.: 2000	1 piece of additional leg	Capacity: 0,2 tons
KM-STSHSY-ST_AS	L.: 2000	1 piece of additional shelf	Capacity: 0,1 tons



Visit our websites for further information and request an offer!  
[kismetal.hu/en](http://kismetal.hu/en)



## Steel shelving systems for pallet storage

Article number:	Dimensions (mm):	Name:	Data:
KM-STSHSY-03-2	D.: 1000 L.: 5400 H.: 3000	Two-piece steel shelving system (3 m)	12 pieces of connectors, 3 pieces of legs
KM-STSHSY-03-3	D.: 1000 L.: 8100 H.: 3000	Three-piece steel shelving system (3 m)	18 pieces of connectors, 4 pieces of legs
KM-STSHSY-035-2	D.: 1000 L.: 5400 H.: 3500	Two-piece steel shelving system (3,5 m)	12 pieces of connectors, 3 pieces of legs
KM-STSHSY-035-3	D.: 1000 L.: 8100 H.: 3500	Three-piece steel shelving system (3,5 m)	18 pieces of connectors, 4 pieces of legs
KM-STSHSY-04-2	D.: 1000 L.: 5400 H.: 4000	Two-piece steel shelving system (4 m)	12 pieces of connectors, 3 pieces of legs
KM-STSHSY-04-3	D.: 1000 L.: 8100 H.: 4000	Three-piece steel shelving system (4 m)	18 pieces of connectors, 4 pieces of legs
KM-STSHSY-06-2	D.: 1000 L.: 5400 H.: 6000	Two-piece steel shelving system (6 m)	12 pieces of connectors, 3 pieces of legs
KM-STSHSY-06-3	D.: 1000 L.: 8100 H.: 6000	Three-piece steel shelving system (6 m)	18 pieces of connectors, 4 pieces of legs
KM-STSHSY-03_AL	H.: 3000	1 piece of additional leg (3 m)	Capacity: 3 tons
KM-STSHSY-035_AL	H.: 3500	1 piece of additional leg (3,5 m)	Capacity: 3 tons
KM-STSHSY-04_AL	H.: 4000	1 piece of additional leg (4 m)	Capacity: 3 tons
KM-STSHSY-06_AL	H.: 6000	1 piece of additional leg (6 m)	Capacity: 3 tons
KM-STSHSY_AC	H.: 2700	1 piece of additional connector	Capacity: 1,5 tons
KM-STSHSY_AMP	H.: 2700	1 piece of additional metal platform	Capacity: 3 tons





**KisMetál Kft.**

**5051 Zagyvarékas, Fekete Lajos út 82.**

**E-mail: [info@kismetal.hu](mailto:info@kismetal.hu)**

**Tel: +36 20 362 3112 | +36 20 457 5547**

**[kismetal.hu/en](http://kismetal.hu/en)  
[kismetalsator.hu/en](http://kismetalsator.hu/en)  
[szarvasmarhatartas.hu/en](http://szarvasmarhatartas.hu/en)**

** [facebook.com/kismetalhu](https://facebook.com/kismetalhu)  
 [youtube.com/@KismetalHu](https://youtube.com/@KismetalHu)**